

About This School

Contact Information (School Year 2012-13)

School		District	
School Name	Honcut	District Name	Palermo Union Elementary
Street	68 School St.	Phone Number	(530) 533-4842
City, State, Zip	Oroville, Ca, 95966	Web Site	www.palermoschools.org
Phone Number	530-742-5284	Superintendent First Name	Jacqueline
Principal	Heather Scott, Principal	Superintendent Last Name	Dolar
E-mail Address	hscott@palermoschools.org	E-mail Address	jdolar@palermoschools.org
County-District-School (CDS) Code	04615236089080		

Last updated: 12/11/2013

School Description and Mission Statement (School Year 2012-13)

The Palermo Union School District is located approximately six miles south of Oroville, the county seat of Butte County. The District consists of six schools: Helen Wilcox (K-3) Honcut (K-2), Palermo (6-8), and two Community Day Schools, K-7 and 5-8. The total district enrollment is approximately 1,321 students. Honcut School, home of the Hornets, is a necessary small school located 22 miles south of Oroville. Enrollment is approximately 18. The District operates a state pre-school on the Palermo School and Helen Wilcox campuses. These two programs and Head Start in Oroville are feeder programs to Honcut School. District schools have an auxiliary support system that includes a music teacher, a school psychologist, a school nurse, and a bilingual aide. Honcut has a multi-funded Title I, and EIA instructional aide for additional support. Most special education student's needs are met at the Honcut site. However, students may be transferred to Helen Wilcox School for a more comprehensive program if needed. Honcut is unique in its size and location. The school has been instrumental in implementing the Response to Intervention (RTI) Model as well as focus groups, front-loading, after school tutoring, and the new Common Core State Standard.

School Goals: All students will reach high standards, at a minimum, attaining proficiency or better in reading and mathematics by 2013-2014. Progress Indicators: STAR, AYP, and API are monitored annually. Local assessments, both formative and summative are monitored weekly, each trimester, and at the end of the school year.

Mission: Honcut School is dedicated to preparing our students for the 21st century by providing each student with a quality education. We are committed to personalizing each student's program and instruction, regardless of complexity, to the best of their ability. Every opportunity is provided for each student to achieve his/her education. The process by which an individual develops mentally, physically, socially, culturally, and emotionally in his/her environment is a definition of education practiced by the staff.

Last updated: 11/27/2013

Opportunities for Parental Involvement (School Year 2012-13)

Honcut School benefits from an active Parent Teacher Group (PTG) shared with Helen Wilcox School. The PTG works with the community on various fundraisers, organizes the spring carnival and potluck, and runs the Accelerated Reader Store. Parents are encouraged to serve on the School Site Council, (SSC). Parents and guardians can support their child's learning environment by: monitoring school attendance and homework completion, participating in extracurricular activities, volunteering at school, attending SSC meetings, and/or planning and participating in activities at home that are supportive of classroom activities.

Student Performance

Standardized Testing and Reporting Program

The Standardized Testing and Reporting (STAR) Program consists of several key components, including:

- **California Standards Tests (CSTs)**, which include English-language arts (ELA) and mathematics in grades two through eleven; science in grades five, eight, and nine through eleven; and history-social science in grades eight, and nine through eleven.
- **California Modified Assessment (CMA)**, an alternate assessment that is based on modified achievement standards in ELA for grades three through eleven; mathematics for grades three through seven, Algebra I, and Geometry; and science in grades five and eight, and Life Science in grade ten. The CMA is designed to assess those students whose disabilities preclude them from achieving grade-level proficiency on an assessment of the California content standards with or without accommodations.
- **Alternate Performance Assessment (CAPA)**, includes ELA and mathematics in grades two through eleven, and science for grades five, eight, and ten. The CAPA is given to those students with significant cognitive disabilities whose disabilities prevent them from taking either the CSTs with accommodations or modifications or the CMA with accommodations.

The assessments under the STAR Program show how well students are doing in relation to the state content standards. On each of these assessments, student scores are reported as performance levels.

For detailed information regarding the STAR Program results for each grade and performance level, including the percent of students not tested, see the [CDE STAR Results Web site](#).

Standardized Testing and Reporting Results by Student Group – Most Recent Year

Percent of Students Scoring at Proficient or Advanced

Group	English-Language Arts	Mathematics	Science	History-Social Science
All Students in the LEA	44%	54%	53%	44%
All Students at the School	N/A	N/A	N/A	N/A
Male	N/A	N/A	N/A	N/A
Female	N/A	N/A	N/A	N/A
Black or African American	N/A	N/A	N/A	N/A
American Indian or Alaska Native	N/A	N/A	N/A	N/A
Asian	N/A	N/A	N/A	N/A
Filipino	N/A	N/A	N/A	N/A
Hispanic or Latino	N/A	N/A	N/A	N/A
Native Hawaiian or Pacific Islander	N/A	N/A	N/A	N/A
White	N/A	N/A	N/A	N/A
Two or More Races	N/A	N/A	N/A	N/A
Socioeconomically Disadvantaged	N/A	N/A	N/A	N/A
English Learners	N/A	N/A	N/A	N/A
Students with Disabilities	N/A	N/A	N/A	N/A
Students Receiving Migrant Education Services	N/A	N/A	N/A	N/A

Note: Scores are not shown when the number of students tested is ten or less, either because the number of students in this category is too small for statistical accuracy or to protect student privacy.

Last updated: 11/27/2013

Accountability

Academic Performance Index

The Academic Performance Index (API) is an annual measure of state academic performance and progress of schools in California. API scores range from 200 to 1,000, with a statewide target of 800. For detailed information about the API, see the [CDE API Web page](#).

Academic Performance Index Growth by Student Group – 2012-13 Growth API Comparison

This table displays, by student group, the number of students included in the API and the Growth API at the school, LEA, and state level.

Group	Number of Students	School	Number of Students	LEA	Number of Students	State
All Students at the School			932	780	4,655,989	790
Black or African American			6		296,463	708
American Indian or Alaska Native			56	766	30,394	743
Asian			31	805	406,527	906
Filipino			0		121,054	867
Hispanic or Latino			335	733	2,438,951	744
Native Hawaiian or Pacific Islander			1		25,351	774
White			384	816	1,200,127	853
Two or More Races			119	796	125,025	824
Socioeconomically Disadvantaged			782	764	2,774,640	743
English Learners			176	716	1,482,316	721
Students with Disabilities			116	668	527,476	615

Last updated: 11/27/2013

Adequate Yearly Progress Overall and by Criteria (School Year 2012-13)

The federal ESEA requires that all schools and districts meet the following Adequate Yearly Progress (AYP) criteria:

- Participation rate on the state’s standards-based assessments in ELA and mathematics
- Percent proficient on the state’s standards-based assessments in ELA and mathematics
- API as an additional indicator
- Graduation rate (for secondary schools)

For detailed information about AYP, including participation rates and percent proficient results by student group, see the [CDE AYP Web page](#).

AYP Criteria	School	District
Made AYP Overall	No	No
Met Participation Rate - English-Language Arts	Yes	Yes
Met Participation Rate - Mathematics	Yes	Yes
Met Percent Proficient - English-Language Arts	No	No
Met Percent Proficient - Mathematics	Yes	No
Met API Criteria	N/A	Yes
Met Graduation Rate	N/A	N/A

Last updated: 12/9/2013

Federal Intervention Program (School Year 2013-14)

Schools and districts receiving federal Title I funding enter Program Improvement (PI) if they do not make AYP for two consecutive years in the same content area (ELA or mathematics) or on the same indicator (API or graduation rate). After entering PI, schools and districts advance to the next level of intervention with each additional year that they do not make AYP. For detailed information about PI identification, see the [CDE PI Status Determinations Web page](#).

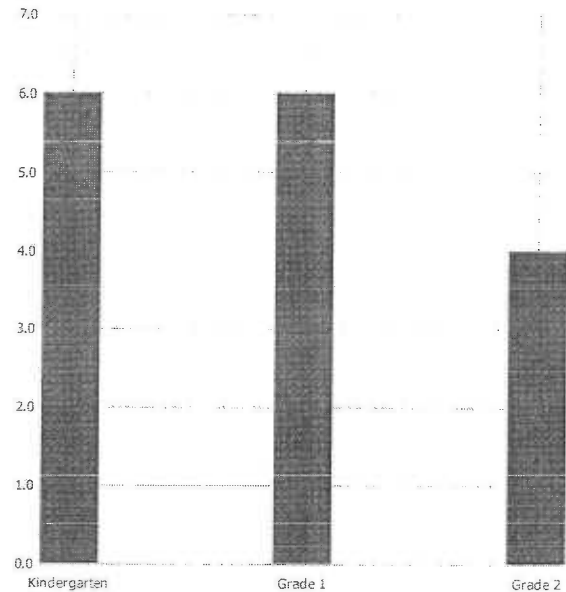
Indicator	School	District
Program Improvement Status	In PI	In PI
First Year of Program Improvement	2013-2014	2008-2009
Year in Program Improvement	Year 1	Year 3
Number of Schools Currently in Program Improvement	N/A	3
Percent of Schools Currently in Program Improvement	N/A	75.0%

Note: Cells shaded in black or with N/A values do not require data.

Last updated: 12/11/2013

Student Enrollment by Grade Level (School Year 2012-13)

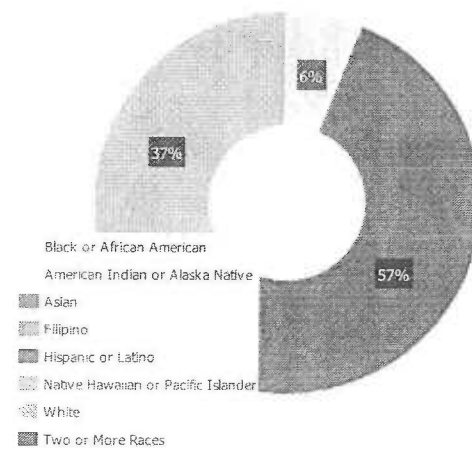
Grade Level	Number of Students
Kindergarten	6
Grade 1	6
Grade 2	4
Total Enrollment	16



Last updated: 12/11/2013

Student Enrollment by Student Group (School Year 2012-13)

Group	Percent of Total Enrollment
Black or African American	6.3
American Indian or Alaska Native	0.0
Asian	0.0
Filipino	0.0
Hispanic or Latino	56.3
Native Hawaiian or Pacific Islander	0.0
White	37.5
Two or More Races	0.0
Socioeconomically Disadvantaged	93.8
English Learners	37.5
Students with Disabilities	6.3



Last updated: 12/11/2013

Average Class Size and Class Size Distribution (Elementary)

Grade Level	2010-11			2011-12			2012-13					
	Average Class Size	Number of Classes *			Average Class Size	Number of Classes *			Average Class Size	Number of Classes *		
		1-20	21-32	33+		1-20	21-32	33+		1-20	21-32	33+
K	5.0	1			7.0	1			6.0	1		
1	5.0	1			4.0	1			6.0	1		
2	5.0	1			5.0	1			6.0	1		
3												
4												
5												
6												
Other												

* Number of classes indicates how many classes fall into each size category (a range of total students per class).

Last updated: 12/11/2013

School Safety Plan (School Year 2012-13)

In compliance with Ed Code 35329.6, the District Comprehensive Safety Plan/Emergency Management Plan is reviewed, updated, and approved by the Governing Board annually by March 1. Each school maintains a copy of the Safety Plan on site and a copy of the site's Emergency Conditions in each classroom. Key elements of the Safety Plan include: a plan of action for maintaining a safe and orderly environment conducive to learning at the school (i.e.: assessment of school safety, identification of strategies and programs that will maintain school safety and campus security) and emergency management procedures consistent with the Standardized Emergency Management System (SEMS) and the National Incident Management System (NIMS) developed by the U.S. Department of Homeland Security. Key elements of the site Emergency Conditions include: a plan of action for a coordinated school wide response to emergencies (i.e. intruder on campus, fire, emergency lockdown, evacuation, etc). Safety drills are held on a regular basis. Fire drills are held monthly. Earthquake/disaster and intruder drills are held twice a year. Visitors to the campus are required to sign in at the school office and wear a visitor's pass at all times.

Last updated: 11/27/2013

Structural: Structural Good
Damage, Roofs

External: Good
Playground/School
Grounds, Windows/
Doors/Gates/Fences

Overall Facility Rate (School Year 2012-13)

Overall Rating

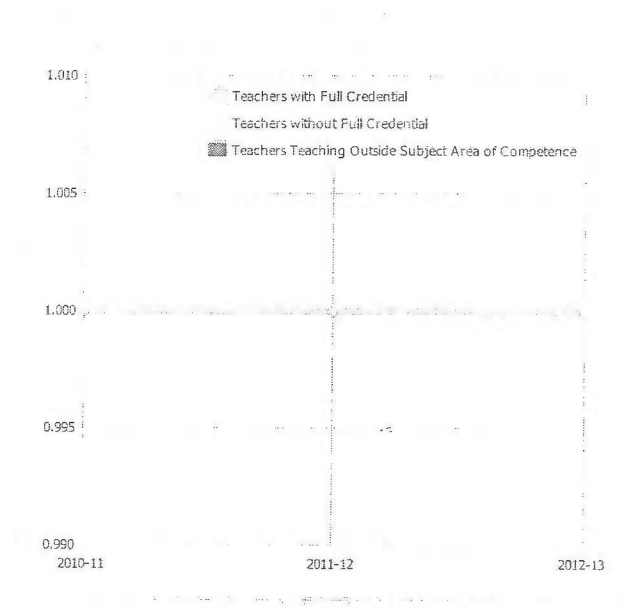
Good

Last updated: 12/11/2013

Teachers

Teacher Credentials

Teachers	School			District
	2010-11	2011-12	2012-13	2012-13
With Full Credential	1	1	1	65
Without Full Credential				
Teachers Teaching Outside Subject Area of Competence (with full credential)				



Last updated: 12/11/2013

Core Academic Classes Taught by Highly Qualified Teachers (School Year 2012-13)

The federal ESEA, also known as NCLB, requires that core academic subjects be taught by Highly Qualified Teachers, defined as having at least a bachelor's degree, an appropriate California teaching credential, and demonstrated core academic subject area competence. For more information, see the CDE [Improving Teacher and Principal Quality Web page](#).

Location of Classes	Percent of Classes In Core Academic Subjects Taught by Highly Qualified Teachers	Percent of Classes In Core Academic Subjects Not Taught by Highly Qualified Teachers
This School	100	
All Schools in District	100	
High-Poverty Schools in District	100	
Low-Poverty Schools in District		

Note: High-poverty schools are defined as those schools with student eligibility of approximately 40 percent or more in the free and reduced price meals program. Low-poverty schools are those with student eligibility of approximately 39 percent or less in the free and reduced price meals program.

Last updated: 12/9/2013

Support Staff

Academic Counselors and Other Support Staff (School Year 2012-13)

Title	Number of FTE* Assigned to School	Average Number of Students per Academic Counselor
Academic Counselor		
Counselor (Social/Behavioral or Career Development)		N/A
Library Media Teacher (librarian)		N/A
Library Media Services Staff (paraprofessional)		N/A
Psychologist	0.2	N/A
Social Worker		N/A
Nurse	0.1	N/A
Speech/Language/Hearing Specialist	0.1	N/A
Resource Specialist (non-teaching)		N/A
Other		N/A

Note: Cells shaded in black or with N/A values do not require data.

* One Full-Time Equivalent (FTE) equals one staff member working full-time; one FTE could also represent two staff members who each work 50 percent of full-time.

Last updated: 12/11/2013

Curriculum and Instructional Materials

Quality, Currency, Availability of Textbooks and Instructional Materials (Fiscal Year 2013-14)

This section describes whether the textbooks and instructional materials used at the school are from the most recent adoption; whether there are sufficient textbooks and instructional materials for each student; and information about the school's use of any supplemental curriculum or non-adopted textbooks or instructional materials.

Year and month in which data were collected: December 2013

Core Curriculum Area	Textbooks and instructional materials	From most recent adoption?	Percent students lacking own assigned copy
Reading/Language Arts	Houghton Mifflin Medallion Edition	Yes	0
Mathematics	Houghton Mifflin: Mathematics 2002	No	0
Science	MacMillan: McGraw-Hill 2006	Yes	0
History-Social Science	Houghton Mifflin/History-Social Studies 2005	Yes	0
Foreign Language			0
Health		No	0
Visual and Performing Arts			0
Science Laboratory Equipment (grades 9-12)			0

Last updated: 12/11/2013

School Finances

Expenditures Per Pupil and School Site Teacher Salaries (Fiscal Year 2011-12)

Level	Total Expenditures Per Pupil	Expenditures Per Pupil (Supplemental / Restricted)	Expenditures Per Pupil (Basic / Unrestricted)	Average Teacher Salary
School Site	\$8,625	N/A	N/A	\$61,417
District	N/A	N/A	\$8,625	\$61,417
Percent Difference – School Site and District	N/A	N/A	N/A	N/A
State	N/A	N/A	\$8,382	\$68,531
Percent Difference – School Site and State	N/A	N/A	%03	%10

Note: Cells shaded in black or with N/A values do not require data.

Supplemental/Restricted expenditures come from money whose use is controlled by law or by a donor. Money that is designated for specific purposes by the district or governing board is not considered restricted. Basic/unrestricted expenditures are from money whose use, except for general guidelines, is not controlled by law or by a donor.

For detailed information on school expenditures for all districts in California, see the CDE [Current Expense of Education & Per-pupil Spending Web page](#). For information on teacher salaries for all districts in California, see the CDE [Certificated Salaries & Benefits Web page](#). To look up expenditures and salaries for a specific school district, see the [Ed-Data Web site](#).

Last updated: 12/10/2013

Types of Services Funded (Fiscal Year 2012-13)

Economic Impact Aid/Limited English Proficient (EIA/LEP) funds to support programs and activities to assist English learners achieve proficiency in the English language as rapidly as practicable and to support programs and activities to improve the academic achievement of English learners.

- Economic Impact Aid/State Compensatory Education (EIA/SCE) funds to support programs and activities designed to assist educationally disadvantaged students achieve state standard proficiency.

- Safe Schools funds to provide training, resources, and technical assistance to establish a school/community environment which is physically and emotionally safe, well-disciplined, and conducive to learning.

- Title II federal funds to provide ongoing staff development for teachers and principals.

- Title I funds to meet the educational needs of low-achieving students enrolled in the highest poverty schools and to provide parent education.

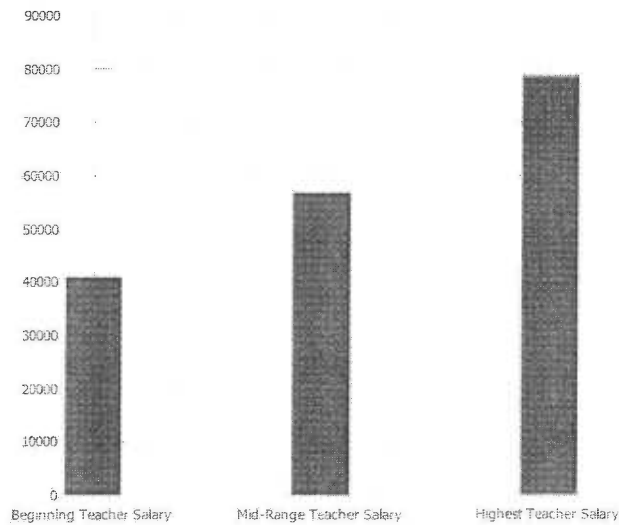
Last updated: 12/11/2013

Teacher and Administrative Salaries (Fiscal Year 2011-12)

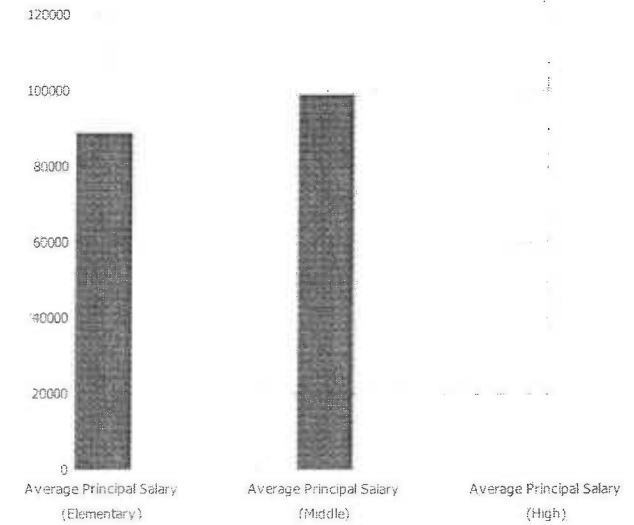
Category	District Amount	State Average For Districts In Same Category
Beginning Teacher Salary	\$40,866	\$41,327
Mid-Range Teacher Salary	\$56,794	\$63,903
Highest Teacher Salary	\$78,473	\$81,573
Average Principal Salary (Elementary)	\$88,765	\$103,887
Average Principal Salary (Middle)	\$98,881	\$107,439
Average Principal Salary (High)	\$0	\$102,399
Superintendent Salary	\$135,904	\$155,551
Percent of Budget for Teacher Salaries	41.0%	41.0%
Percent of Budget for Administrative Salaries	8.0%	6.0%

For detailed information on salaries, see the CDE [Certificated Salaries & Benefits Web page](#).

Teacher Salary Chart



Principal Salary Chart



Last updated: 12/10/2013

School Completion and Postsecondary Preparation

Admission Requirements for California's Public Universities

University of California

Admission requirements for the University of California (UC) follow guidelines set forth in the Master Plan, which requires that the top one-eighth of the state's high school graduates, as well as those transfer students who have successfully completed specified college course work, be eligible for admission to the UC. These requirements are designed to ensure that all eligible students are adequately prepared for University-level work.

For general admissions requirements, please visit the [UC Admissions Information Web page](#).

California State University

Eligibility for admission to the California State University (CSU) is determined by three factors:

- Specific high school courses
- Grades in specified courses and test scores
- Graduation from high school

Some campuses have higher standards for particular majors or students who live outside the local campus area. Because of the number of students who apply, a few campuses have higher standards (supplementary admission criteria) for all applicants. Most CSU campuses have local admission guarantee policies for students who graduate or transfer from high schools and colleges that are historically served by a CSU campus in that region. For admission, application, and fee information, see the [CSU Web page](#).

Instructional Planning and Scheduling

Professional Development

This section provides information on the annual number of school days dedicated to staff development for the most recent three-year period.

The district schedules staff development on non-contract days or after school hours: afterschool workshots, conference attendance, individual mentoring, and PLC. Areas of focus for staff development is selected based on needs of district from achievement data. Teachers are supported through teacher-principal meetings and professional learning communities.

PUSD teachers engage in active staff development throughout the year by attending in-District training sessions given by staff and consultants, as well as site-based sessions presented at staff meetings, committee/grade level meetings, and during formal observation post conferences. Staff development has focused on fostering the Explicit Direct Instruction (EDI) and professional collaborative teams. District and site sessions, as well as follow-up classroom observation and feedback have been provided on the following topics: Student Engagement, Checking for Understanding-TAPPLE, Corrective Feedback, and Delivering Information.

Last updated: 12/11/2013